



ENCLOSURE FOR COMMAND DEVICES, 22MM, ROUND, ENCLOSURE MATERIAL PLASTIC, ENCLOSURE TOP PART GRAY, 3 COMMAND POINTS PLASTIC, C=INDICATOR LIGHT CLEAR, LABEL LED 24V, SCREW TERMINAL, B=PUSHBUTTON GREEN, LABEL: I, 1NO, SCREW TERMINAL, A=PUSHBUTTON RED, LABEL: O, 1NC, SCREW TERMINAL, BASE MOUNTING, TOP AND BOTTOM 1 X M20 EACH

Figure similar

| | |
|---|---|
| product brand name | SIRIUS ACT |
| Product designation | Commanding and signaling devices |
| Design of the product | Enclosure |
| Manufacturer article number | |
| <ul style="list-style-type: none"> • of supplied LED module • of the supplied holder | C3 = 3SU1401-2BB60-1AA0 A = 3SU1500-0AA10-0AA0 / B = 3SU1500-0AA10-0AA0 / C = 3SU1500-0AA10-0AA0 |
| <ul style="list-style-type: none"> • of the supplied actuator • of supplied repeater • of supplied empty enclosure | A = 3SU1000-0AB20-0AA0 / B = 3SU1000-0AB40-0AA0 C = 3SU1001-6AA60-0AA0 3SU1803-0AA00-0AB1 |

| Enclosure: | |
|--|-----------------------|
| Design of the housing | with recess for label |
| Shape of the enclosure front | rectangular |
| Material of the enclosure | plastic |
| Number of control points | 3 |
| Product component | |
| <ul style="list-style-type: none"> • EMERGENCY STOP device • protective collar | No |
| Color | |
| <ul style="list-style-type: none"> • of top part of the enclosure | grey |
| Delivery state | |
| <ul style="list-style-type: none"> • as a kit • pre-wired on strip terminal | No |
| Mounting type of the enclosure | Vertical |

Actuator:

| | |
|--|---|
| Design of the operating mechanism | Pushbutton / pushbutton / indicator light |
| Product feature | |
| • lockout | No |
| Product expansion optional Light source | Yes |
| Color | |
| • of the actuating element | A = red / B = green / C = clear |
| Material of the actuating element | plastic |
| Shape of the actuating element | round |
| Number of contact modules | 2 |
| Type of unlocking device | A = none / B = none / C = none |

Front ring:

| | |
|-------------------------------------|----------|
| Product component front ring | Yes |
| Design of the front ring | Standard |
| Material of the front ring | plastic |
| Color of the front ring | black |

Holder:

| | |
|-------------------------------|---------|
| Material of the holder | Plastic |
|-------------------------------|---------|

Display:

| | |
|------------------------------|---|
| Number of LED modules | 1 |
|------------------------------|---|

General technical data:

| | |
|--|--------------------------------------|
| Product function | |
| • positive opening | Yes |
| • EMERGENCY OFF function | No |
| • EMERGENCY STOP function | No |
| Vibration resistance | |
| • acc. to IEC 60068-2-6 | 10 ... 500 Hz: 5g |
| Protection class IP | IP66, IP67, IP69(IP69K) |
| Equipment marking | |
| • acc. to DIN EN 61346-2 | S |
| • acc. to DIN EN 81346-2 | S |
| Design of the fuse link for short-circuit protection of the auxiliary switch with type of assignment 1 required | gG / Dz 10 A, quick-acting / Dz 10 A |
| Continuous current of the C characteristic MCB | 10 A |

Auxiliary circuit:

| | |
|------------------------------|---|
| Number of NC contacts | |
| • for auxiliary contacts | 1 |
| Number of NO contacts | |
| • for auxiliary contacts | 1 |
| Number of CO contacts | |
| • for auxiliary contacts | 0 |

| | |
|--|--------------|
| Design of the contact of the auxiliary contacts | Silver alloy |
|--|--------------|

Connections/ Terminals:

| | |
|--|---|
| Type of electrical connection | |
| <ul style="list-style-type: none"> • of modules and accessories | Screw-type terminal |
| Type of electrical connection on enclosure | Cable routing above and below, both 1 x M20 |
| Tightening torque | |
| <ul style="list-style-type: none"> • with screw-type terminals | 0.8 ... 0.9 N·m |

Interfaces:

| | |
|---|---------|
| Design of the interface | |
| <ul style="list-style-type: none"> • for communication | without |

Ambient conditions:

| | |
|--|--------------------|
| Ambient temperature | |
| <ul style="list-style-type: none"> • during operation | -25 ... +70 °C |
| <ul style="list-style-type: none"> • during storage | -40 ... +80 °C |
| Environmental category during operation acc. to IEC 60721 | 3K6, 3C3, 3S2, 3M6 |

Installation/ mounting/ dimensions:

| | |
|--|----------------|
| Mounting type | |
| <ul style="list-style-type: none"> • of modules and accessories | Floor mounting |
| Height | 154 mm |
| Width | 85 mm |
| Depth | 75.8 mm |
| Shape of the installation opening | round |

Accessories:

| | |
|--|---|
| Number of labels | 3 |
| Marking of the name plate for command devices | A = O / B = I / C = "without inscription" |
| Color of the label | A = black / B = black / C = black |

Certificates/ approvals:

Further information

Information- and Downloadcenter (Catalogs, Brochures,...)

<http://www.siemens.com/industrial-controls/catalogs>

Industry Mall (Online ordering system)

<http://www.siemens.com/industrymall>

Cax online generator

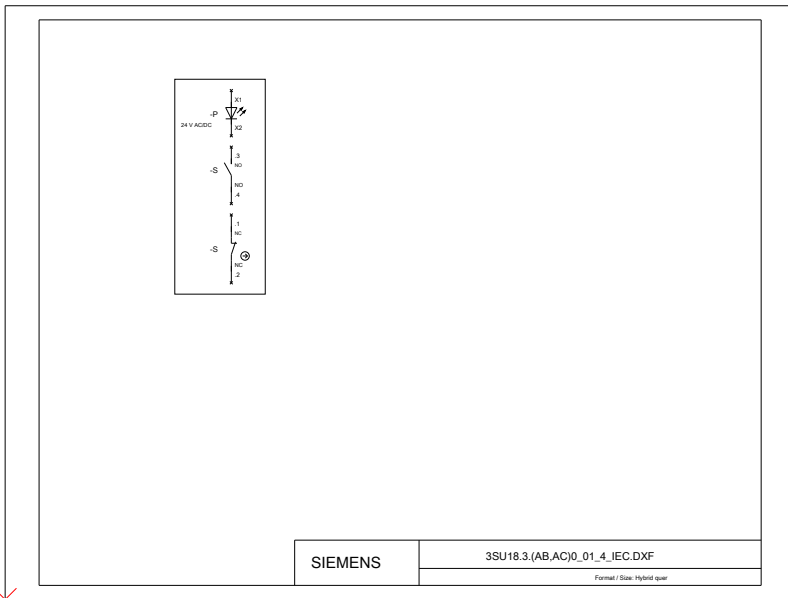
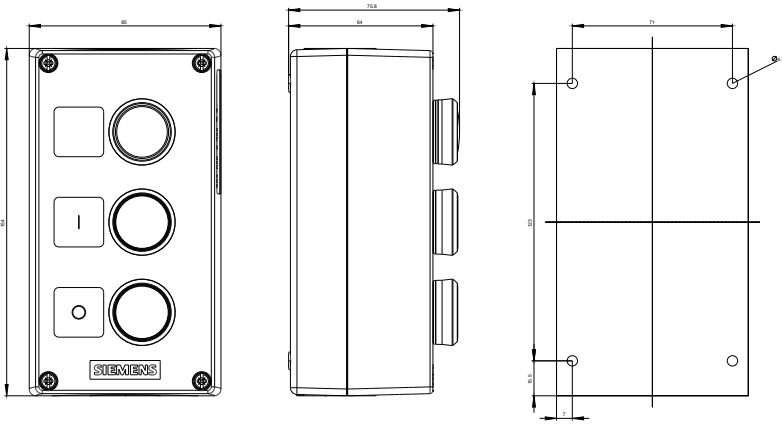
<http://support.automation.siemens.com/WW/CAXorder/default.aspx?lang=en&mlfb=3SU18030AB002AB1>

Service&Support (Manuals, Certificates, Characteristics, FAQs,...)

<https://support.industry.siemens.com/cs/ww/en/ps/3SU18030AB002AB1>

Image database (product images, 2D dimension drawings, 3D models, device circuit diagrams, EPLAN macros, ...)

http://www.automation.siemens.com/bilddb/cax_de.aspx?mlfb=3SU18030AB002AB1&lang=en



last modified:

01.06.2015